

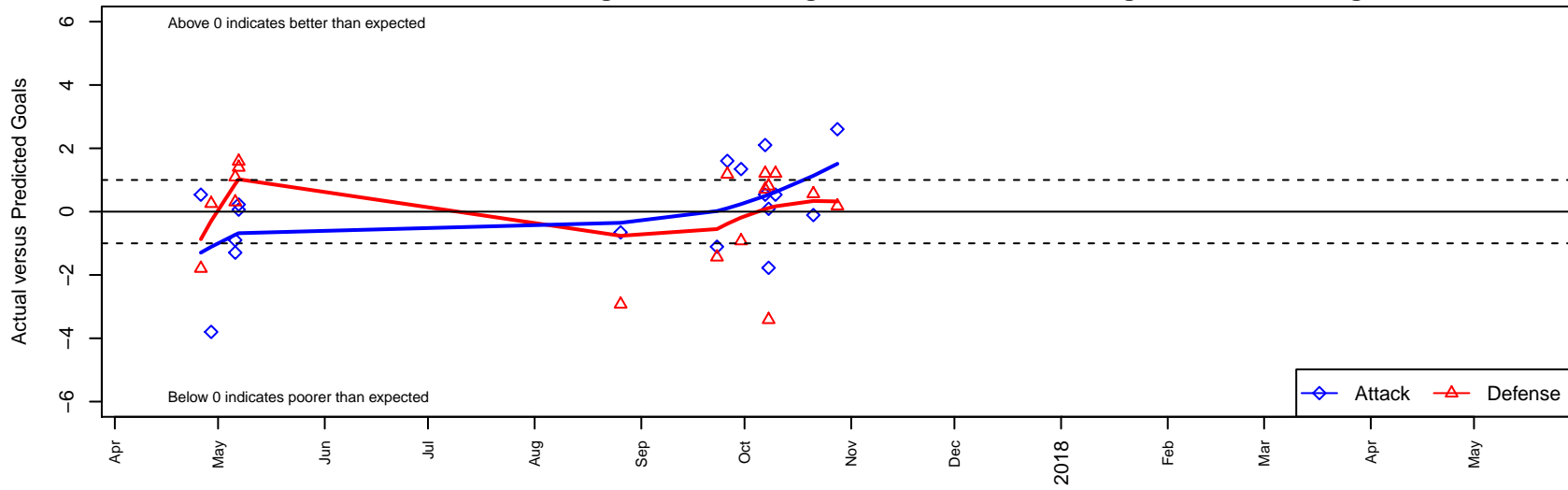
Canyon Optimist Inferno B04

Caldwell, ID
 B04 total strength=1270
 attack=8.32 defense=3.13
 fall league = Idaho D3 Div 1 U14

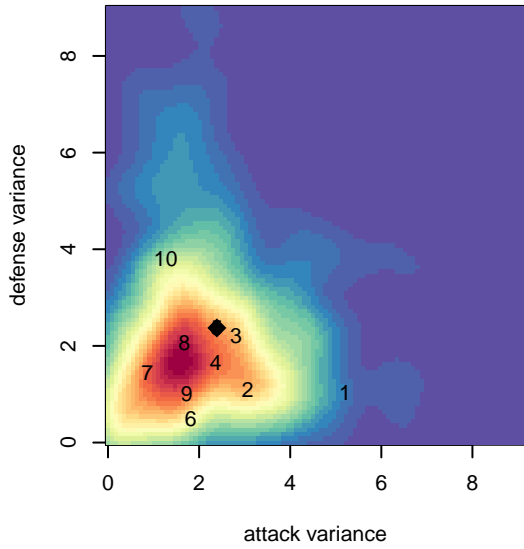
alt names used:
 INFERNO
 INFERNO (ID)

Venues played:
 2016 Spr Idaho D3 U13B Division 2
 2016 Canyon Rim Classic U13 B U13
 2017 Idaho D3 Division 1 U14
 2017 GEM State Challenge U14 U14

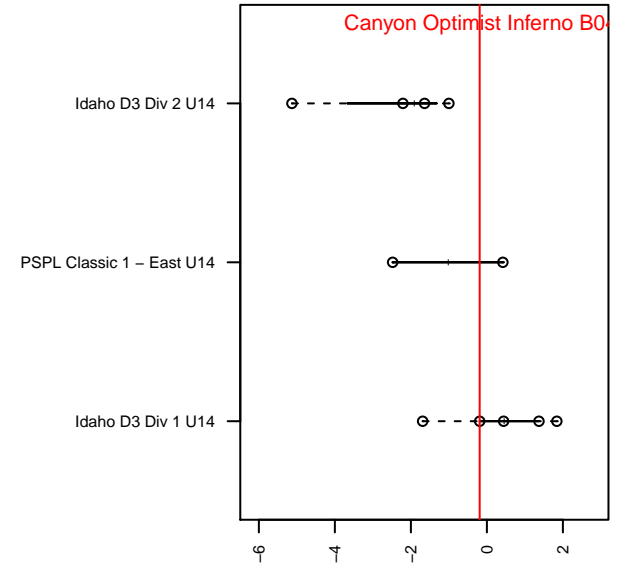
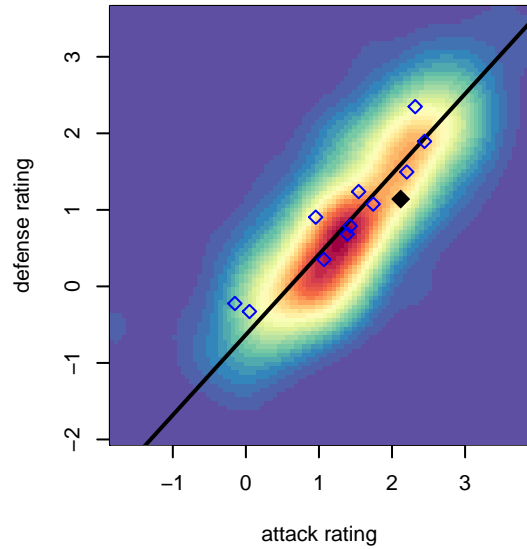
Canyon Optimist Inferno B04
 Dots are actual minus expected GF (blue circles) and GA (red triangles).
 Blue line is smoothed change in attack strength. Red is smoothed change in defense strength.



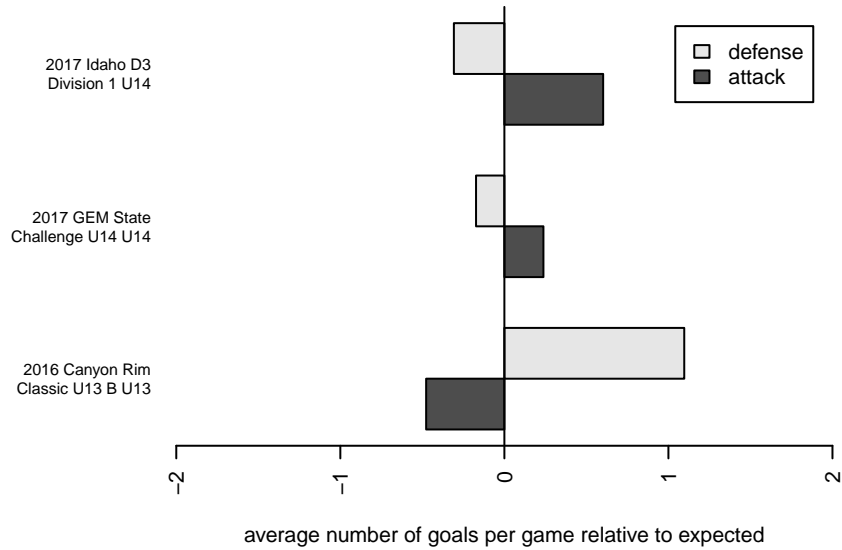
**attack and defense variance (black dot)
relative to other teams
and top 10 in region**



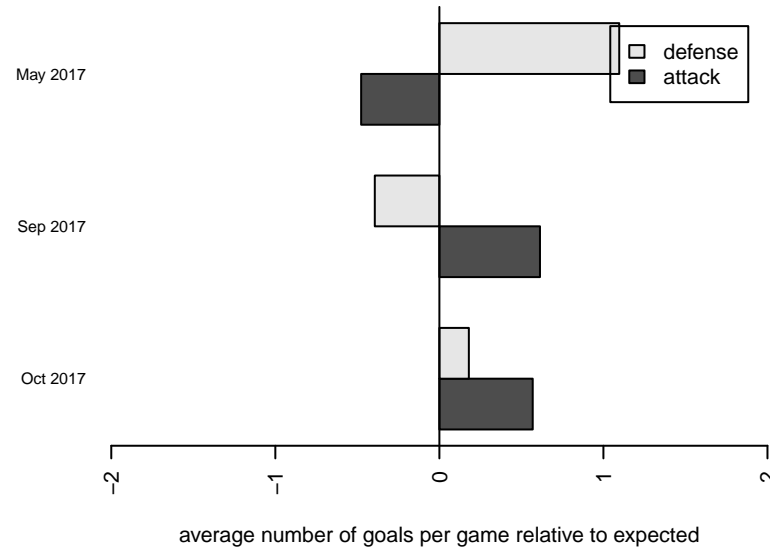
**attack and defense rating
relative to others at age
and all opponents in last 13 months**



Performance relative to 13 month average



Performance relative to 13 month average



| date | home | | away | | venue | pred.home | pred.away |
|-------------|----------------------------------|---|-----------------------------------|---|-----------------------------------|------------------|------------------|
| 2017-10-28 | Canyon Optimist Inferno B04 | 4 | Boise Nationals Timbers Blue B04 | 3 | 2017 Idaho D3 Division 1 U14 | 1.40 | 3.18 |
| 2017-10-21 | FC Nova Gold B04 | 3 | Canyon Optimist Inferno B04 | 1 | 2017 Idaho D3 Division 1 U14 | 3.56 | 1.11 |
| 2017-10-10 | Idaho Rush Nero B04 | 0 | Canyon Optimist Inferno B04 | 4 | 2017 Idaho D3 Division 1 U14 | 1.21 | 3.46 |
| 2017-10-08 | Canyon Optimist Inferno B04 | 1 | Jackson Hole United White B04 | 5 | 2017 GEM State Challenge U14 U14 | 2.77 | 1.59 |
| 2017-10-08 | Canyon Optimist Inferno B04 | 3 | Boise Nationals Timbers Red B04 | 0 | 2017 GEM State Challenge U14 U14 | 2.91 | 0.81 |
| 2017-10-07 | Canyon Optimist Inferno B04 | 8 | Sandpoint Strikers B04 | 0 | 2017 GEM State Challenge U14 U14 | 5.90 | 0.70 |
| 2017-10-07 | Idaho Rush Nero B04 | 0 | Canyon Optimist Inferno B04 | 4 | 2017 GEM State Challenge U14 U14 | 1.21 | 3.46 |
| 2017-09-30 | Canyon Optimist Inferno B04 | 2 | Idaho Rush Premier B04 | 4 | 2017 Idaho D3 Division 1 U14 | 0.66 | 3.08 |
| 2017-09-26 | Boise Nationals Timbers Blue B04 | 2 | Canyon Optimist Inferno B04 | 3 | 2017 Idaho D3 Division 1 U14 | 3.18 | 1.40 |
| 2017-09-23 | Canyon Optimist Inferno B04 | 0 | FC Nova Gold B04 | 5 | 2017 Idaho D3 Division 1 U14 | 1.11 | 3.56 |
| 2017-08-26 | Idaho Rush Premier B04 | 6 | Canyon Optimist Inferno B04 | 0 | 2017 Idaho D3 Division 1 U14 | 3.08 | 0.66 |
| 2017-05-07 | BYSL Bluebirdz B04 | 0 | Canyon Optimist Inferno B04 | 2 | 2016 Canyon Rim Classic U13 B U13 | 1.40 | 1.94 |
| 2017-05-07 | Canyon Optimist Inferno B04 | 3 | Jackson Hole United White B04 | 0 | 2016 Canyon Rim Classic U13 B U13 | 2.77 | 1.59 |
| 2017-05-06 | Canyon Optimist Inferno B04 | 3 | Boise Nationals Timbers White B05 | 0 | 2016 Canyon Rim Classic U13 B U13 | 3.90 | 1.09 |
| 2017-05-06 | Canyon Optimist Inferno B04 | 9 | Sun Valley Blue B04 | 0 | 2016 Canyon Rim Classic U13 B U13 | 10.30 | 0.31 |
| 2017-04-29 | Canyon Optimist Inferno B04 | 6 | Weiser B04 | 0 | 2016 Spr Idaho D3 U13B Division 2 | 9.80 | 0.26 |
| 2017-04-26 | Idaho Rush Nero B04 | 3 | Canyon Optimist Inferno B04 | 4 | 2016 Spr Idaho D3 U13B Division 2 | 1.21 | 3.46 |